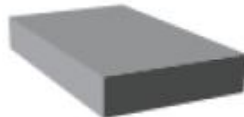


EPDM SPONGE

Made of EPDM sponge rubber which is a hard wearing and durable closed cell sponge with a waterproof sealed surface. It can handle temperatures up to 120°C. These are sold in increments of 1 metre or by the coil which has a standard length of 20m. Pictures are indicative only and not to scale.



8x3mm
P499



13x3mm
P486



25x3mm
P399

Recommend Glue:
Bostik EPDM
Adhesive
50ml & 500ml



10x4.5mm
3344



17x4.5mm
P503



8x6mm
39-8799



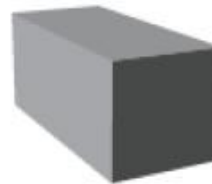
13x6mm
P401



25x6mm
P403



50x6mm
P488



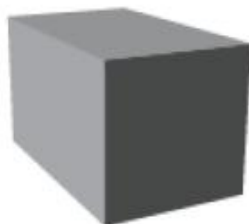
10x10mm
P405



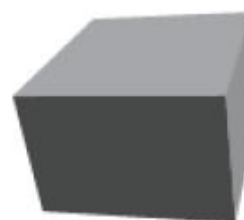
13x10mm
P406



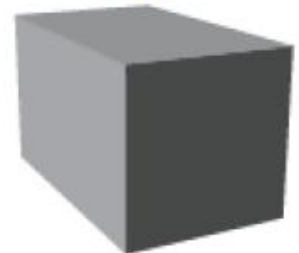
25x10mm
P487



13x13mm
P408



19x13mm
P410



16x16mm
P415



25x13mm
P411



50x13mm
P414



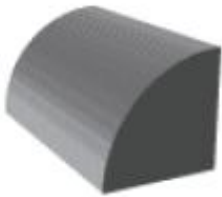
19x16mm
P416



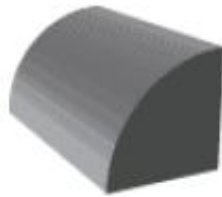
25x16mm
1371

SELF ADHESIVE SPONGE STRIP

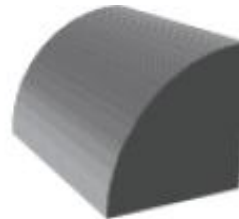
Rubber seals come in a variety of specially designed shapes made from quality EPDM closed cell sponge with a waterproof sealed surface. They are backed with a general-purpose pressure sensitive adhesive. Sold in increments of a meter or by the roll which has a standard length of 30m. Pictures are not to scale and are indicative only.



10x10mm
1392



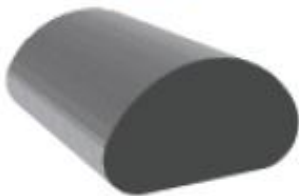
11x11mm
1391



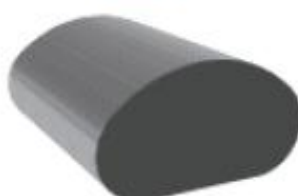
12x12mm
1390



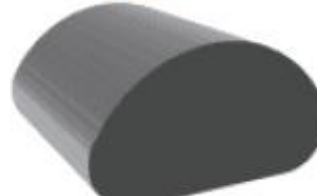
18x7mm
1395



16x9.5mm
1397



18x10 mm
1396



22x12 mm
1394



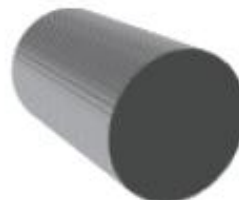
4mm
P219



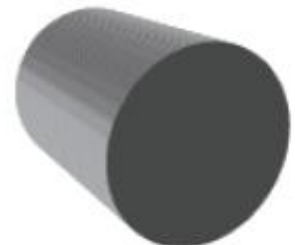
6mm
P489



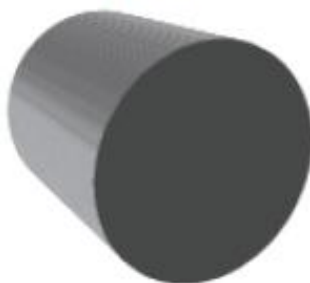
10mm
P138



13mm
P142



15mm
P144



19mm
P498



19x14mm
1398



15x14.5
1400



10x12mm
1402

SELF ADHESIVE EPDM HD

Black closed cell foam rubber for demanding applications. It will seal most components subject to pressure and vacuum conditions. It absorbs vibrations, is highly comfortable and has good weather aging.

Available sizes:

Size (25m roll)	Code	Size (15m roll)	Code	Size (7m roll)	Code
12x3.2mm	5602	12x4.8mm	5603	12x12.7mm	5601
18x3.2mm	10200	18x4.8mm	5604	18x12.7mm	5609
24x3.2mm	5605	24x4.8mm	5606	24x12.7mm	5608

NITRILE/PVC/NEO BLEND

This strip is good for water/weather seals in extreme conditions, critical closures, switchboards, automotive gaskets, seals and insulation. It has excellent temperature and compression set resilience.

Available sizes:

Size (25m roll)	Code	Size (15m roll)	Code	Size (8m roll)	Code
12x3mm	5582	12x5mm	5583	12x9mm	10211
18x3mm	10209	18x5mm	5614	18x9mm	12212
24x3mm	12211	24x5mm	10210	24x9mm	12213

GREY PVC MED RECOVERY

Foam sealant that is easily compressed. Typical applications include cabs/trailer joints, air conditioning vents, cool rooms, light diffusers, overlap joints, door frame assemblies and general appliances.

Available sizes:

Size (30.5m roll)	Code	Size (12.5m roll)	Code	Size (7.6m roll)	Code
12x3mm	5584	12x4.8mm	5586	12x12.7mm	5587
18x3mm	10208	18x4.8mm	12210	18x12.7mm	12209
24x3mm	5585	24x4.8mm	5588	24x12.7mm	5597

GREY POLYETHYLENE (PE)

Foam sealant for general vibration, sealing and closure applications including duct work, heater assemblies, access door panels, display cabinets, refrigeration etc.

Available sizes:

Size (20m roll)	Code	Size (12m roll)	Code	Size (6m roll)	Code
12x3mm	5589	12x5mm	5590	12x10mm	10201
18x3mm	5591	18x5mm	5592	18x10mm	5607
24x3mm	5593	24x5mm	5594	24x10mm	5599
		36x5mm	5607	36x10mm	5600
		48x5mm	5596	48x10mm	5601



BLACK NEOPRENE

This comes in a standard 4 metre pack. It is foam sealant for general vibration, sealing and closure applications including duct work, heater assemblies, access door panels, display cabinets, refrigeration etc.

Available sizes:

Size	Code	Size	Code	Size	Code	Size	Code
9x3mm	3629	9x6mm	3628	9x9mm	3627	12x12mm	3671
12x3mm	3643	12x6mm	3642	12x9mm	3641	19x12mm	3639
19x3mm	3638	19x6mm	3637	19x9mm	3636	25x12mm	3635
25x3mm	3634	25x6mm	3633	25x9mm	3632		