

# EPDM SPONGE

Made of EPDM sponge rubber which is a hard wearing and durable closed cell sponge with a waterproof sealed surface. It can handle temperatures up to 120°C. These are sold in increments of 1 metre or by the coil which has a standard length of 20m. Pictures are indicative only and not to scale.



8x3mm

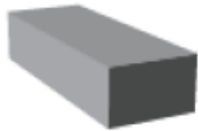


13x3mm



25x3mm

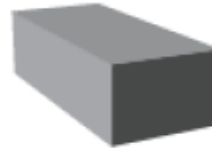
**Recommend Glue:**  
**Bostik EPDM**  
**Adhesive**  
**500ml**



10x4.5mm



17x4.5mm



8x6mm



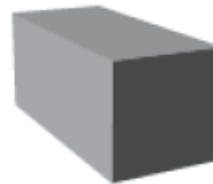
13x6mm



25x6mm



50x6mm



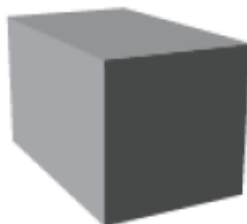
10x10mm



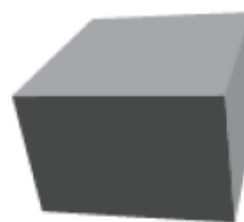
13x10mm



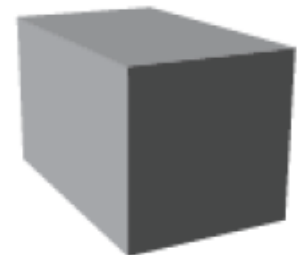
25x10mm



13x13mm



19x13mm



16x16mm



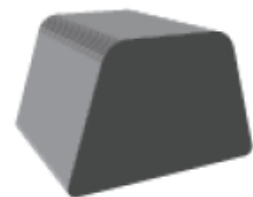
25x13mm



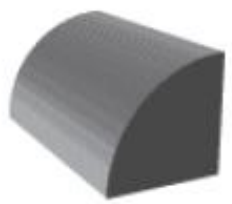
50x13mm



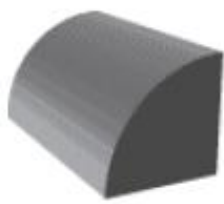
19x16mm



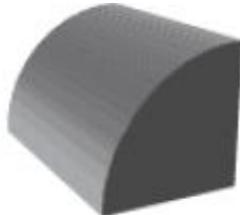
25x16mm



10x10mm



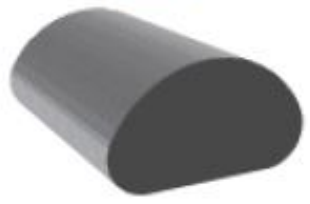
11x11mm



12x12mm



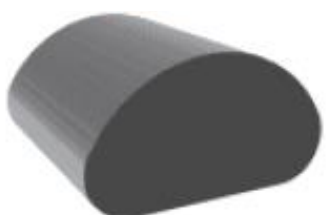
18x7mm



16x9.5mm



18x10 mm



22x12 mm



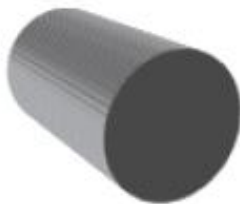
4mm



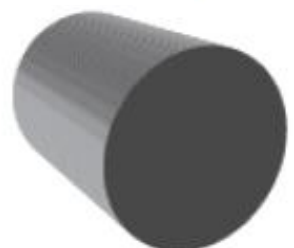
6mm



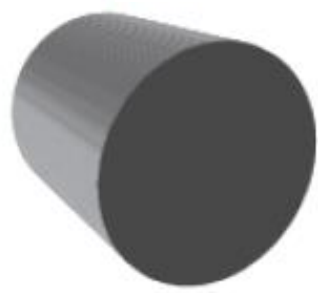
10mm



13mm



15mm



19mm



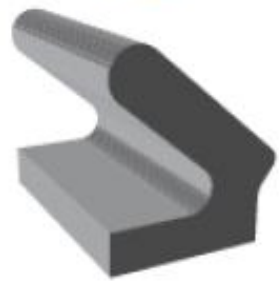
19x14mm



15x14.5



10x12mm



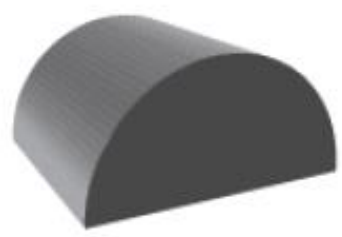
17x14mm



9.5x14.3x6.4mm



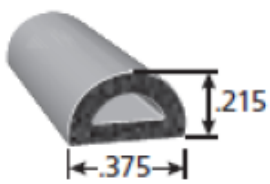
25x15x15mm  
Soft Nitrile Rubber



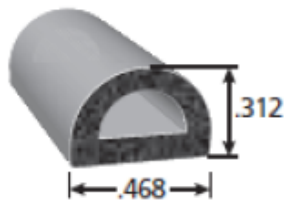
25x15mm  
Soft Nitrile Rubber

# SELF ADHESIVE SPONGE STRIP

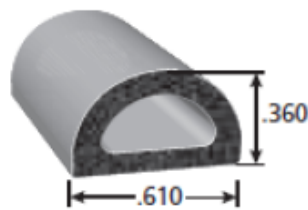
Rubber seals come in a variety of specially designed shapes made from quality EPDM closed cell sponge with a waterproof sealed surface. They are backed with a general-purpose pressure sensitive adhesive. Sold in increments of a meter or by the roll which has a standard length of 30m. Pictures are not to scale and are indicative only.



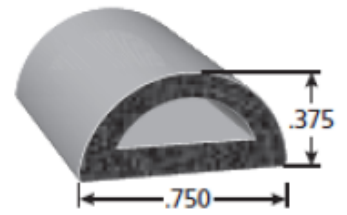
9.5x5.5mm



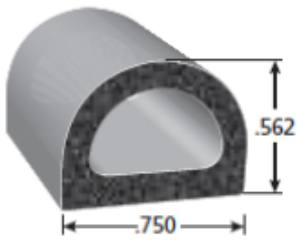
11.9x7.9mm



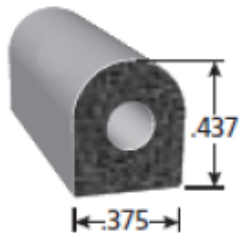
15.8x9.5mm



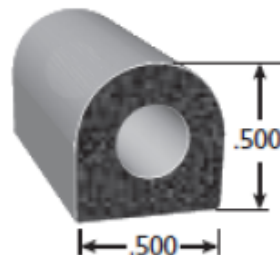
19x9.5mm



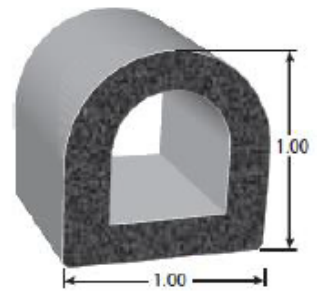
19x14.5mm



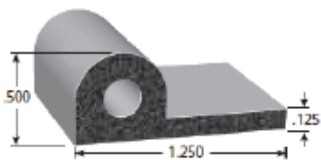
9.5x11mm



12.7x12.7mm



25.4x25.4mm



32x12.7x3.2mm



8x10mm  
(100m Roll)



12x10mm  
(100m Roll)



14x12mm  
(100m Roll)



21x15mm (100m Roll)



9x4mm (100m Roll)  
Brown  
White



9x7mm (100m Roll)  
Brown  
White



9x6mm (100m Roll)  
Brown  
White

## GREY POLYETHYLENE (PE)

Foam sealant for general vibration, sealing and closure applications including duct work, heater assemblies, access door panels, display cabinets, refrigeration etc.

### Available sizes:

Size (25m roll)	Size (15m roll)	Size (7m roll)
12x3mm	12x5mm	12x10mm
18x3mm	18x5mm	18x10mm
24x3mm	24x5mm	24x10mm
	36x5mm	36x10mm
	48x5mm	48x10mm

Also available by the metre instore.

## BLACK NEOPRENE

This comes in a standard 4 metre pack. It is foam sealant for general vibration, sealing and closure applications including duct work, heater assemblies, access door panels, display cabinets, refrigeration etc.

### Available sizes:

Size	Size	Size	Size
9x3mm	9x6mm	9x9mm	9x12mm
12x3mm	12x6mm	12x9mm	12x12mm
12x3mm	12x6mm	12x9mm	12x12mm
19x3mm	19x6mm	19x9mm	19x12mm
25x3mm	25x6mm	25x9mm	25x12mm
50x3mm	50x6mm	50x9mm	50x12mm

Other Widths available on request.