

NYLON ROUND TIPS

All nylon tips are available in black and white (unless otherwise specified) and the sizes are based on the internal diameter. They are sold individually or in bulk amounts.

Recommended uses: Capping tube steel like chair legs or roof racks.

Available sizes:

Size	Code	Size	Code	Size	Code	Size	Code
2.4mm	3719	9.5mm	3753	25.4mm	3721	44.5mm	3813
3.2mm	3749	12.0mm	3716	27.0mm	3786	47.6mm	3884
4.0mm	3710	12.7mm	3759	28.6mm	3764	50.0mm	3775
5.0mm	3712	15.9mm	3717	32.0mm	3723	63.5mm	3814
6.4mm	3751	19.0mm	3719	35.0mm	3788	76.0mm	3794
8.0mm	3714	22.2mm	3762	38.0mm	3774		



NYLON SQUARE TIPS

Available sizes:

Size	Code	Size	Code	Size	Code	Size	Code
12.0mm	3795	22.0mm	3728	32.0mm	3797	51.0mm	3800
16.0mm	3796	25.0mm	3729	38.0mm	3798	19.0mm angled	3767
19.0mm	3727	28.7mm	3816	40.0mm	3799		



NYLON ROUND PLUGS

All nylon plugs are available in black and white (unless specified otherwise) and their size is based on the exterior measurement of the steel tube.

Recommended uses: Plugging steel tubes like chair legs and roof racks.

Available sizes: (S=smooth)

Size	Code	Size	Code	Size	Code	Size	Code
12.7mm (s)	3730	25.0mm (s)	3773	32.0mm	3741	51.0mm	3745
16.0mm	3732	25.0mm	3738	38.0mm	3743	60.3mm	3766
19.0mm	3735	28mm	3740	40.0mm	3802	75.0mm	3746
22.0mm	3737	32.0mm (s)	3731	48.0mm	3465		



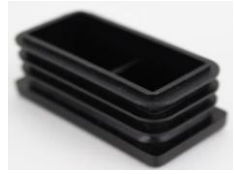
NYLON SQUARE PLUGS

Available sizes:

Size	Code	Size	Code	Size	Code	Size	Code
12.7mm	3902	25.0mm	3771	38.0mm	3770	65.0mm	3758
16.0mm	3899	30.0mm	3806	45.0mm	3808	75.0mm	10186
19.0mm	3755	32.0mm	3984	51.0mm	3757	100mm	3815
22.0mm	3756	34.9mm	3870	60.0mm	3809		



NYLON RECTANGLE PLUGS



Available sizes:

Size	Code	Size	Code	Size	Code
25x12mm	3988	38x25mm	3989	76x38mm	3835
30x20mm	3828	50x25mm	3769	80x40mm	3837
35x19mm	3768	75x25mm	3834	75x50mm	3869
40x20mm	3829	51x32mm	3831	80x50mm	3838
50x20mm	3830	65x38mm	3832	100x50mm	3841

NYLON HOLE PLUGS



These plugs are available in black only and the size is based on the intended hole to be plugged.

Recommended uses: Use instead of blind grommets and body plugs, used to plug holes in wood and metal panels.

Available sizes:

Size	Code	Size	Code	Size	Code	Size	Code
4.8mm	3934	11.0mm	3924	22.2mm	3938	32.0mm	3907
6.3mm	3935	12.7mm	3921	25.4mm	3922	38.0mm	3904
8.0mm	3920	15.9mm	3937	28.0mm	3906	45.0mm	3908
9.5mm	3874	19.1mm	3939	30.0mm	3909	51.0mm	3905

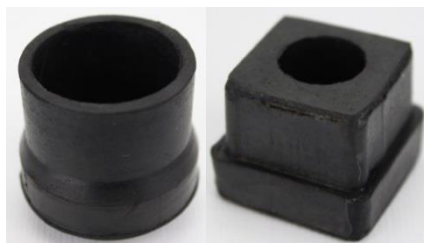
RUBBER TIPS AND PLUGS

All rubber tips and plugs are made of natural black rubber. The tip size is based on the internal diameter of the tip whereas the plug is based on the exterior measurement of the steel tube.

Recommended uses: Plugging/capping steel tubes like chair legs and roof racks.

Available sizes:

Round tip		Square tip		Square plug		Rectangle plug	
Size	Code	Size	Code	Size	Code	Size	Code
6.5mm	50086	19.0mm	50077	25.0mm	50070	50x25mm	50067
9.5mm	50085	25.0mm	50076	32.0mm	50069		
13.0mm	50084	32.0mm	50075	38.0mm	50068		
15.0mm	50083	38.0mm	50074				
16.0mm	50082						
19.0mm	50088						
25.0mm	50081						
28.0mm	50087						
31.0mm	50080						
38.0mm	50079						
50.0mm	50078						



RUBBER ROUNDED TIPS

Made of natural brown rubber, sold individually or in bulk.

Available sizes:

Size	Code	Size	Code	Size	Code
19.0mm	4074	22.0mm	4075	25.0mm	4076



PETROL TANK CAPS

Made of nitrile rubber which is ideal for use around petrol.

Available sizes:

Size	Code	Size	Code	Size	Code
32.0mm	1278	44.5mm	1276	57.2mm	1274
38.0mm	1277	50.0mm	1275	62.5mm	1273
				75.0mm	1272



CRUTCH AND STICK TIPS

Made of natural rubber and available in black or grey. Ideal for metal or wood crutches or walking sticks.

Available sizes:

Crutch and stick tips

Size	Code	Size	Code
38.0mm	1277	62.5mm	1273
44.5mm	1276	75.0mm	1272
57.2mm	1274		

Sherpa tips

Size	Code	Size	Code
19.0mm	4037	25.0mm	4097
22.0mm	4038	28.0mm	4098

